



## DL9600 *Viper*<sup>™</sup> Pistol Grip DOS Terminal

### FEATURES

- **MOBILE @work**<sup>™</sup>
- WLAN 802.11b or OpenAir radio options
- **RadioReady** concept
- Wide innovative display (320x240 pixel)
- Large numeric or alphanumeric keyboard
- Modularity (keyboard, scanning engine and WLAN PC-Card)
- High autonomy Ni-MH and Li-Ion battery pack
- Robustness and Ergonomics
- Battery Hot Swapping

### APPLICATIONS

- Warehousing management
- Shop Floor
- Retail

### GENERAL DESCRIPTION

Datalogic is proud to announce a new product line of rugged portable terminals specially designed for industrial applications: *mobile@work*<sup>™</sup>.

The first component of this family is the **DL9600 Viper**<sup>™</sup>, a powerful pistol grip terminal, based on PC-like architecture and **RadioReady** concept. The **Viper**<sup>™</sup> has been conceived to match the requirements of harsh environments, with no compromises in terms of reliability and robustness. The state-of-the-art technology powering the **Viper**<sup>™</sup> is completely protected from mechanical shocks and sealed against water and dust penetration.

Built to be an open system, the **Viper**<sup>™</sup> is supporting the most wide spread mobile standards, such as IEEE 802.11b and OpenAir, depending on the PC card used; it makes communication management extremely straightforward in both new and existing installations. Furthermore, an innovative user interface, featuring one of the largest LCD display ever on a pistol grip terminal, 1/4 VGA, and a spacious, intuitive keyboard, improves efficiency at the point of data collection.

In order to maximise functionality, the **Viper**<sup>™</sup> has been developed to be modular: batteries, keyboard, scanning engine and WLAN can be shaped to meet all the requirements of the application.

Since industrial environments are characterized by day-long use, the **Viper**<sup>™</sup> has been designed with the user in mind: lightweight and well balanced together with a hand-fitting shape provide the best user comfort in its product class.

Communication management to the legacy system takes advantage of the new software product line that includes terminal emulation connectivity for OS/400, Unix, Microsoft Windows platforms, including the most used ERPs, such as SAP R/3.

**Viper**<sup>™</sup> is definitely the ultimate solution for your mobile industrial application.

---

## DATA TRANSMISSION / COMMUNICATION

The *mobile@work*<sup>™</sup> systems allow many type of reliable communications. On the terminal is located a sophisticated industrial connector that provides an immediate and sturdy communication interface through the serial EIA RS232 standard. The same connector allows also to recharge the batteries in fast-charge mode.

When a wireless serial link is needed, the integrated IrDA interface can be conveniently used; Datalogic supplies a universal driver compliant with the most wide spread mobile printers, so that barcode labels and notes can be easily printed by the user in field.



The most advanced features of the *mobile@work*<sup>™</sup> product line are suited to support the wireless communication through a WLAN (Wireless Local Area Network). With the *RadioReady* concept the most diffused WLAN PC-cards can be successfully used. Datalogic can provide both IEEE 802.11b and OpenAir WLAN equipments, such as PC-card, included in the terminal and the Access Point, that provides the bridging between the wired and the wireless devices. The Access Point can be configured and managed through the wired or wireless network, by serial connection or modem, with the use of Telnet Access software, web browser or SNMP (Simple Network Management Protocol).

---

## USER INTERFACE

All the components of the user interface have been designed with the aim to provide the highest ease of use, beginning with the wide high contrast LCD display (240 x 320 pixels) capable of visualising any operation in all ambient light conditions. Designers can use the display format that best suits their particular application needs, using the several font formats available. Datalogic also offers the *Viper*<sup>™</sup> with 2 keypad layout Alphanumeric or Numeric, interchangeable, to meet the requirement of all applications. An innovative feature of the *mobile@work* product line is the battery hot swapping. The battery can be easily replaced without loosing data and time, so that the user productivity is optimized to a downtime close to zero.



---

## ACCESSORIES

The CC9600 Single Cradle, specifically developed to support batch applications, provides charging power to the *Viper*<sup>™</sup> and a spare battery pack. It supports direct serial connection through RS232 standard and Multidrop connection through a RS485 double-interface.

The MBC9600 Multiple Battery Charger is the ideal accessory for 24-hour applications or wireless applications. It is able to quickly charge and re-condition 4 battery packs simultaneously.

The new power supply FPS18 (14 VDC, 4A) has been added to perfectly match the *Viper*<sup>™</sup> requirements. It is the ideal solution for all the *Viper*<sup>™</sup> applications either with direct connections through CAB-4001 or with the CC9600 and MBC9600. The FPS18 is a full range power supply, from 90 to 250 VAC with a standard plug for PC/Monitor cable; although Datalogic supplies the proper cable (separately) to connect the FPS18 to the power socket, the standard connector included in its box allows any integrator to buy the cable locally.



CC9600 - Single Cradle



MBC9600 - 4 slot Multiple Battery Charger

## CONNECTIVITY TOOLS

Performance of the **Viper™** can be increased with the assistance of TN Client, a complete software package for terminal emulation based on a standard Telnet-TCP/IP protocol. TN Client brings together the VT-100, VT-220, HP700/92, IBM 5250 and 3270 emulations, allowing for real time interaction between the Mobile unit and Unix, HP, IBM AS/400 and IBM Mainframe systems.



To address the windows environment Datalogic has started an important development with the aim to provide a set of software tools, mainly addressed to the system integrator and visual programmer, that help in getting the mobile terminals connected to the host system through without the need to program the mobile unit locally.

### DL TN-Link™

The DL TN-Link is based on the Active\_X architecture; it includes two basic components, the **Client-Pro™** that is used to design the users screen and the **run-time OCX**, that can be added to the RAD language programming suite.

This approach allows the programmer to manage the mobile unit from the main application, through a set of standard commands.

On each screen created by the **Client-Pro™** utility, the data entry can be completely customised, enabling the laser input only when is needed.

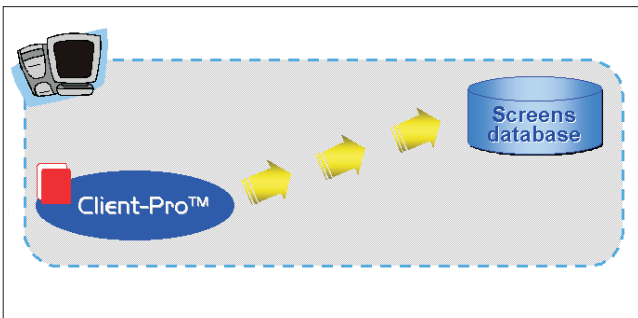
On Datalogic DOS-based terminals (DL8600, Viper™ but also Formula DOS terminals) it is only required to install terminal emulation software VT100.

### DL Web-Link™

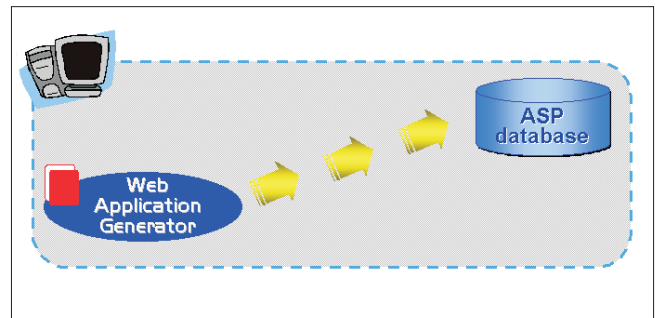
The DL WEB-Link is based on web technology and takes advantage of the embedded capability of Internet Protocol, managing the communication between the database and the mobile unit through a standard IIS (Internet Information Server).

The DL WEB-Link solution is composed of two elements: the **Web Application Generator** and the **Web Client** for DOS terminals. The first one is used to build up the application by creating a set of pages ASP (Active Server Page) that directly interacts with the database located in the host side, using a standard XML/HTML approach.

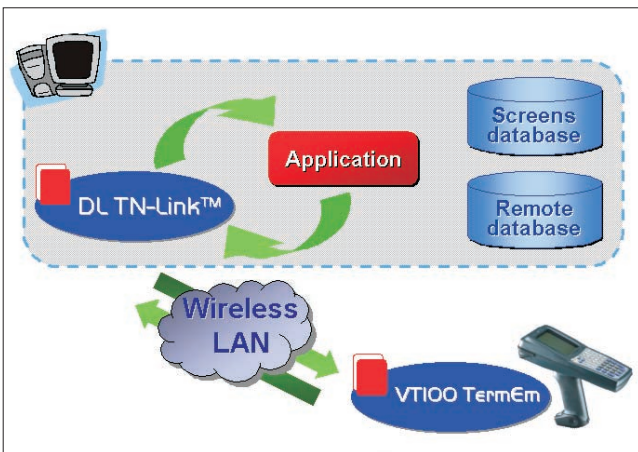
The second one is nothing else than a web browser, character based, specifically developed for the Datalogic DOS terminals (DL8600, Viper™ but also Formula DOS terminals).



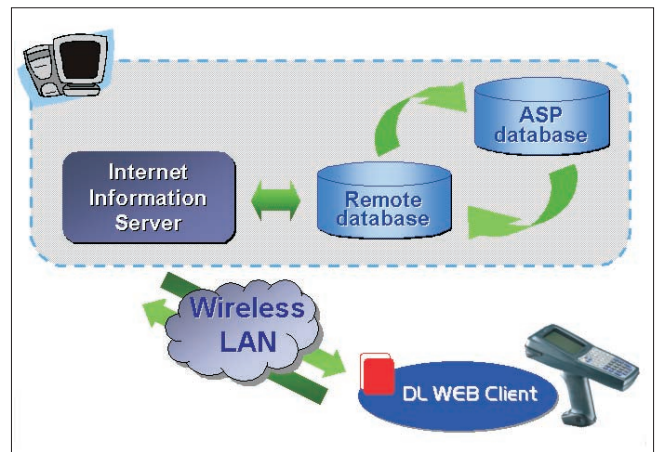
DL TN-Link™ Design time



DL WEB-Link™ Design time



DL TN-Link™ Run time



DL WEB-Link™ Run time

# SPECIFICATIONS

## PHYSICAL CHARACTERISTICS

DIMENSIONS	235 mm H x 105 mm W x 180 mm D
WEIGHT	Approx. 820 gr. with battery and WLAN PC-card
LASER SOURCE	Visible Laser Diode, 650 nm
OPERATING TEMPERATURE	-20° TO 50°C
STORAGE TEMPERATURE	-20° TO 70°C
DROP	Multiple 1.8 m drops to concrete
ENVIRONMENTAL SEALING	IP65
DISPLAY	Graphic high-contrast LCD with 240 x 320 pixel resolution and backlight feature; keyboard controlled contrast
SCREEN FORMAT	24 char. x 21 lines with default font
POWER	Removable battery pack with rechargeable NiMH or Li-ION batteries; Super-capacitor to back-up system RAM during battery pack change; Lithium batteries to preserve set-up and data; Local connection for fast battery charging and serial communication
CONTROL SWITCHES	Power ON/OFF, contrast, backlight, alpha toggle in numeric keyboard
KEY PADS	48 alphanumeric or 32 numeric key silicon rubber keypad
STATUS INDICATOR LIGHTS	GOOD DECODE, BATTERY LEVEL, CHARGING STATUS

## PERFORMANCE

MICROPROCESSOR	32-bit Amd486 CPU, up to 32 MHz
OPERATING SYSTEM	Datalight ROM-DOS 6.22, Datalogic proprietary BIOS
SYSTEM RAM MEMORY	2 or 8MB
SYSTEM FLASH MEMORY	2 or 8MB
REAL-TIME CLOCK	Time and date stamping under software control; year 2000 compliant
INTERFACES	IrDA: bi-directional communication port with mobile printers compatibility Electrical: integrated 7-pin RS232 with data rate up to 115.2 Kbps, including fast in-line battery charger

## RF DATA COMMUNICATIONS

NETWORK	WLAN, IEEE 802.11b or OpenAir compliant
ANTENNA	Internal, with diversity option
FREQUENCY RANGE	Country dependent, typically 2.4 to 2.5 GHz

## PERIPHERALS

SCAN ENGINES	Linear: High Performance or Long Range; 2D: Raster for PDF417 and stacked codes
CRADLES:	Single desk cradle with additional slot for spare battery; bi-directional data communication supported through IrDA interface
BATTERY CHARGER	4-slot multiple battery charger, with re-cycling option



Product and company names and logos referenced may be either trademarks or registered trademarks of their respective companies.

We reserve the right to make modifications and improvements

**Datalogic S.p.A.**  
**Italy**  
Corporate Headquarters  
Tel. +39 051/3147011  
Fax +39 051/726562  
venditeitalia@datalogic.it  
info@datalogic.it

**Sales Italy**  
Tel. +39 051/3147300  
Fax +39 051/726562  
venditeitalia@datalogic.it

**Sales International**  
(Central and South America,  
Far East, Middle East - Africa)  
Tel. +39 041/5986511  
Fax +39 041/5986550  
sales-intl@datalogic.it

**Australia**  
Datalogic PTY LTD.  
Tel. +61 3/95589299  
Fax +61 3/95589233  
sales@datalogic.com.au

**Germany**  
Datalogic GmbH  
Tel. +49 7026/6080  
Fax +49 7026/5746  
info@datalogic.de

**Sweden**  
Datalogic AB  
Tel. +46 40/385000  
Fax +46 40/385001  
info@datalogic.se

**Austria**  
Datalogic Handelsges. mbH  
Tel. +43 2236/258820  
Fax +43 2236/258825  
office@datalogic.co.at

**Japan**  
Izumi Datalogic Co., Ltd.  
Tel. +81 78/3033400  
Fax +81 78/3033402  
idmarke@izumi-datalogic.co.jp

**United Kingdom**  
Datalogic UK Ltd.  
Tel. +44 1582/464900  
Fax +44 1582/464999  
enquiries@datalogic.demon.co.uk

**Denmark**  
Datalogic AB  
Tel. +45 44/209970  
Fax +45 44/209972  
info@datalogic.se

**Netherlands**  
Datalogic Optic Electronics BV  
Tel. +31 346/572888  
Fax +31 346/568736  
info@datalogic.nl

**U.S.A.**  
Datalogic Inc.  
Tel. +1 859/6897000  
Fax +1 859/3344970  
info@datalogic.com

**France**  
Datalogic France S.A.  
Tel. +33 1/60921111  
Fax +33 1/60921340  
info@datalogic.fr

**Spain**  
Datalogic Iberia  
Tel. +34 91/3837755  
Fax +34 91/3837962  
dliberia@datalogic.it

## Datalogic Quality Partner

